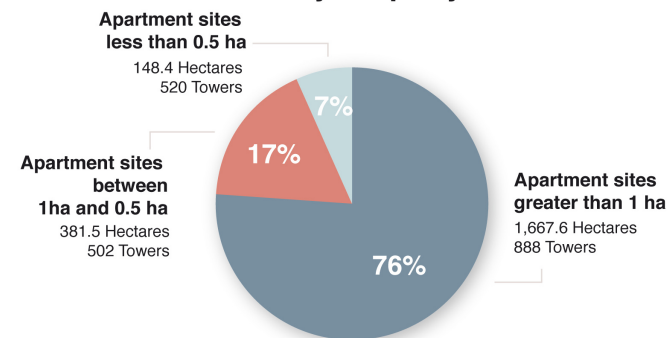


Apartment Tower Properties

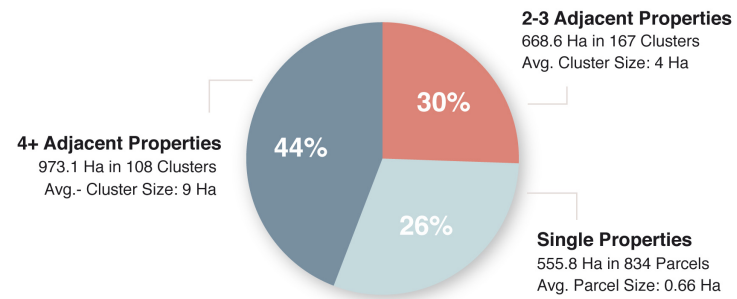
In the GGH, 47 per cent of Tower properties are larger than 1 ha, and 57 per cent are directly adjacent to another Tower property.

- Legend**
- Property larger than 1 ha

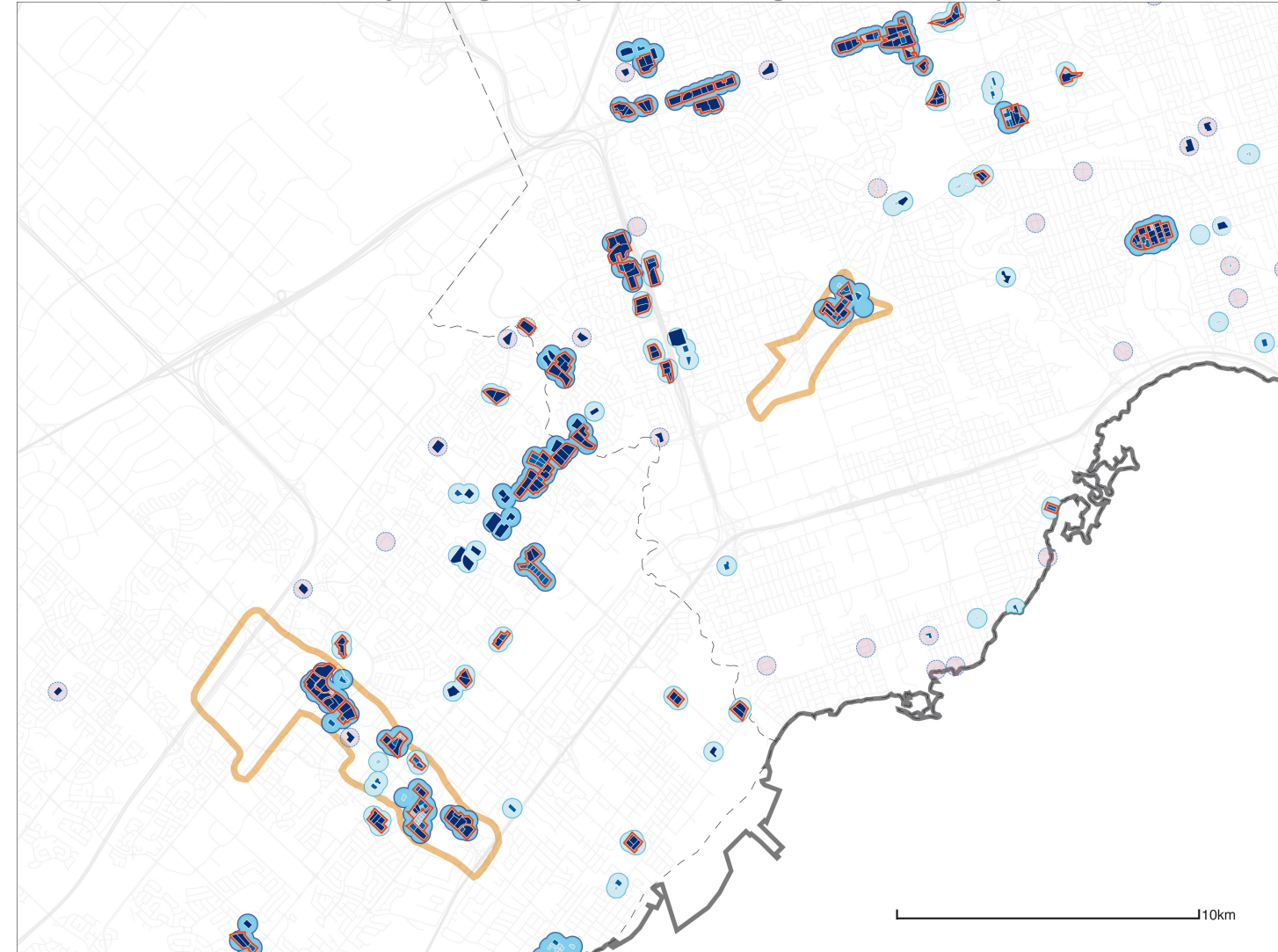
Total Hectares of Apartment Tower Sites by Property Size



Total Hectares of Apartment Tower Sites by Clusters of Adjacent Properties



Total Hectareage of Apartment Sites: 2,197.5 ha

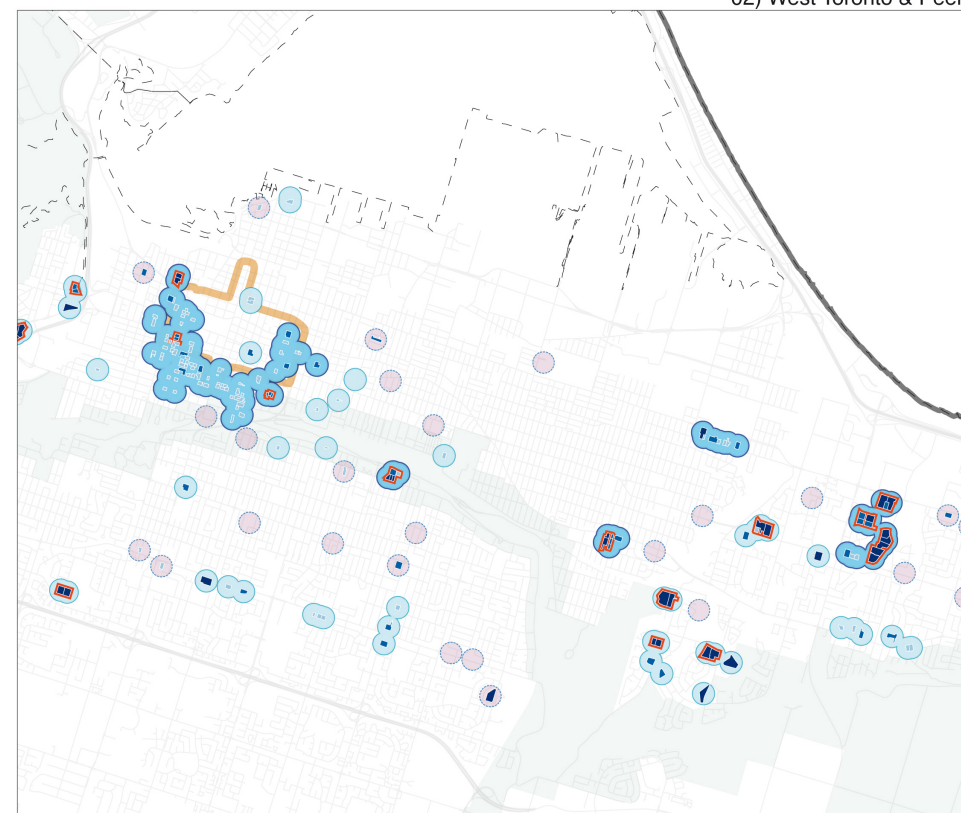


02) West Toronto & Peel

- Legend**
- Approximate Boundary of Urban Growth Centre
 - Cluster of 5 or more Apartment Towers
 - Cluster of 2-4 Apartment Towers
 - Isolated Apartment Towers
 - Cluster of directly adjacent properties
 - Property boundary, greater than 1 ha
 - Property boundary, between 0.5 ha and 1 ha
 - Property boundary, less than 0.5 ha
 - Designated Greenbelt Area
 - Roadway
 - - - Boundary of Jurisdictions within GGH

Base layers for this map, as well as designated Greenbelt Areas and Urban Growth Centre Locations provided by the Ministry of Infrastructure and the Ministry of Municipal Affairs and Housing of the Ontario government.

Regional rapid transit corridors shown on this map are based on the research team's interpretation of Schedule 2 of the Metrolinx Regional Transportation Plan entitled "25-Year Plan for the Regional Rapid Transit and Highway Network"



03) Downtown Hamilton